



座標求積表

| 地番<br>測点 | 4-1+9+10-1+13+16+19-1+21<br>Xn | Yn        | (Xn+1 - Xn-1)Yn | 距離      |
|----------|--------------------------------|-----------|-----------------|---------|
| KA33     | -119294.158                    | 40663.261 | 36881.577727    | 8.106   |
| KA32     | -119298.142                    | 40656.201 | -434370.861484  | 14.580  |
| KA31     | -119304.842                    | 40643.251 | -706948.707894  | 24.517  |
| KA27     | -119315.536                    | 40621.189 | -572677.522522  | 7.753   |
| KA26     | -119318.940                    | 40614.223 | -150150.782431  | 0.605   |
| KA70     | -119319.233                    | 40613.693 | -24611.897958   | 0.611   |
| KA69     | -119319.546                    | 40613.168 | -525737.459760  | 24.470  |
| KA68     | -119332.178                    | 40592.210 | -701271.019960  | 9.166   |
| KA43     | -119336.822                    | 40584.307 | -237539.948871  | 2.638   |
| KA71     | -119338.031                    | 40581.962 | -85059.792352   | 2.068   |
| KA72     | -119338.918                    | 40580.093 | -71623.864145   | 2.215   |
| KA73     | -119339.796                    | 40578.059 | -66710.328996   | 2.514   |
| KA44     | -119340.562                    | 40575.664 | -132317.240304  | 9.390   |
| KA45     | -119343.057                    | 40566.611 | -127460.291762  | 3.387   |
| KA29     | -119343.704                    | 40563.286 | -43362.152734   | 3.608   |
| KA30     | -119344.126                    | 40559.702 | -48833.881208   | 7.590   |
| KA46     | -119344.908                    | 40552.152 | -502968.341256  | 56.245  |
| KA57     | -119356.529                    | 40497.120 | -570361.438080  | 3.002   |
| KA58     | -119358.992                    | 40495.403 | -4798138.319858 | 116.871 |
| KA59     | -119475.015                    | 40509.457 | -4688199.968067 | 4.035   |
| KA65     | -119474.723                    | 40513.482 | -478302.168492  | 13.488  |
| KA66     | -119486.821                    | 40519.446 | -923276.096556  | 10.922  |
| KA67     | -119497.509                    | 40521.699 | -1137970.873017 | 18.054  |
| KA64     | -119514.904                    | 40526.534 | 221436.981776   | 100.707 |
| KA60     | -119502.973                    | 40626.532 | -4852311.102484 | 132.283 |
| KA61     | -119634.341                    | 40642.064 | -5554266.392432 | 39.085  |
| KG301    | -119639.636                    | 40603.339 | -1575937.396607 | 37.107  |
| KG107-IS | -119673.154                    | 40619.261 | -1746425.126695 | 10.474  |
| K2-IS    | -119682.631                    | 40623.722 | -953235.636730  | 15.821  |
| K3-IS    | -119696.619                    | 40631.114 | -498990.711034  | 13.818  |
| H-K1     | -119694.912                    | 40644.827 | 1321200.746462  | 31.034  |
| H-K8     | -119664.113                    | 40641.012 | 1265601.754692  | 4.505   |
| H-K7     | -119663.771                    | 40645.505 | 432021.072645   | 10.356  |
| H-K6     | -119653.484                    | 40644.310 | 603933.802290   | 36.573  |
| H-K5     | -119648.912                    | 40680.597 | 45724.991028    | 4.219   |
| H-K4     | -119652.360                    | 40683.030 | 298979.587470   | 17.630  |
| KA62     | -119641.563                    | 40696.968 | 858828.115704   | 16.841  |
| KA56     | -119631.257                    | 40710.288 | 1052075.972784  | 30.328  |
| KA55     | -119615.720                    | 40736.335 | 863691.774670   | 22.144  |
| KA54     | -119610.055                    | 40757.743 | 718395.978118   | 12.081  |
| KA53     | -119598.094                    | 40756.039 | 1587121.670738  | 27.090  |
| KA52     | -119571.113                    | 40753.807 | 1926545.263711  | 20.451  |
| KA51     | -119550.821                    | 40751.057 | 1623481.359823  | 19.732  |
| KA50     | -119531.274                    | 40748.361 | 1718399.131731  | 22.764  |
| KA49     | -119508.650                    | 40745.836 | 1558731.956180  | 15.701  |
| KA48     | -119493.019                    | 40744.348 | 888308.275096   | 6.215   |
| KA47     | -119486.848                    | 40743.606 | 490145.580180   | 5.897   |
| KA42     | -119480.989                    | 40742.935 | 271633.147645   | 0.812   |
| KA41     | -119480.181                    | 40742.852 | 392231.436204   | 8.876   |
| KA40-1   | -119471.362                    | 40741.843 | 1206080.778329  | 20.933  |
| KA25-1   | -119450.578                    | 40739.349 | 1658376.679743  | 20.068  |
| KA24     | -119430.655                    | 40736.935 | 1668381.172925  | 21.192  |
| KA23     | -119409.623                    | 40734.332 | 1616053.153436  | 18.777  |
| KA22     | -119390.982                    | 40732.070 | 1622562.008450  | 21.308  |
| KA21     | -119369.788                    | 40729.861 | 1202182.577276  | 8.389   |
| KA20     | -119361.466                    | 40728.802 | 493429.436230   | 3.811   |

多角点座標一覧表

| 測点名  | X 座標        | Y 座標      |
|------|-------------|-----------|
| TA3  | -119314.632 | 40724.819 |
| TA4  | -119357.249 | 40730.012 |
| TA5  | -119422.411 | 40737.968 |
| TA6  | -119480.629 | 40745.028 |
| TA7  | -119533.073 | 40752.795 |
| TA8  | -119585.775 | 40763.407 |
| TA9  | -119637.539 | 40766.915 |
| TB1  | -119697.277 | 40631.287 |
| TB2  | -119653.995 | 40627.590 |
| TB3  | -119612.767 | 40670.767 |
| TB4  | -119541.827 | 40655.472 |
| TB5  | -119507.577 | 40575.317 |
| TB6  | -119511.094 | 40504.640 |
| TB7  | -119446.944 | 40504.148 |
| TB8  | -119395.469 | 40497.903 |
| TB9  | -119357.120 | 40494.801 |
| KOU1 | -119491.028 | 40649.783 |
| TC1  | -119294.632 | 40661.535 |
| TC2  | -119309.713 | 40619.895 |
| TC3  | -119337.013 | 40582.940 |
| TC4  | -119346.802 | 40538.501 |

引照点座標一覧表

| 測点名   | X 座標        | Y 座標      |
|-------|-------------|-----------|
| IN-1  | -119699.594 | 40632.625 |
| IN-2  | -119686.422 | 40718.170 |
| IN-3  | -119599.720 | 40761.623 |
| IN-4  | -119436.908 | 40744.275 |
| IN-5  | -119245.550 | 40721.229 |
| IN-6  | -119293.356 | 40654.070 |
| IN-7  | -119323.683 | 40595.864 |
| IN-8  | -119341.479 | 40542.005 |
| IN-9  | 119353.036  | 40483.718 |
| IN-10 | -119475.842 | 40500.371 |

|       |                     |       |           |
|-------|---------------------|-------|-----------|
| 図面名   | 突測図 (求積表・座標リスト)     |       |           |
| 所在    | 宮崎市錦本町 地内           |       |           |
| 測量年月日 | 令和2年1月23日<br>～8月20日 | 作製年月日 | 令和2年8月29日 |
| 縮尺    |                     | 図面番号  | 2-2       |

世界測地系（Ⅱ系） 平成23年11月21日測量

|       |        |       |
|-------|--------|-------|
| 地番    | 4番2    | 地積測量図 |
| 土地の所在 | 宮崎市錦本町 |       |

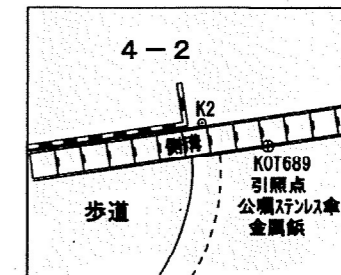
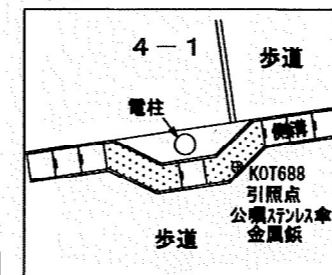
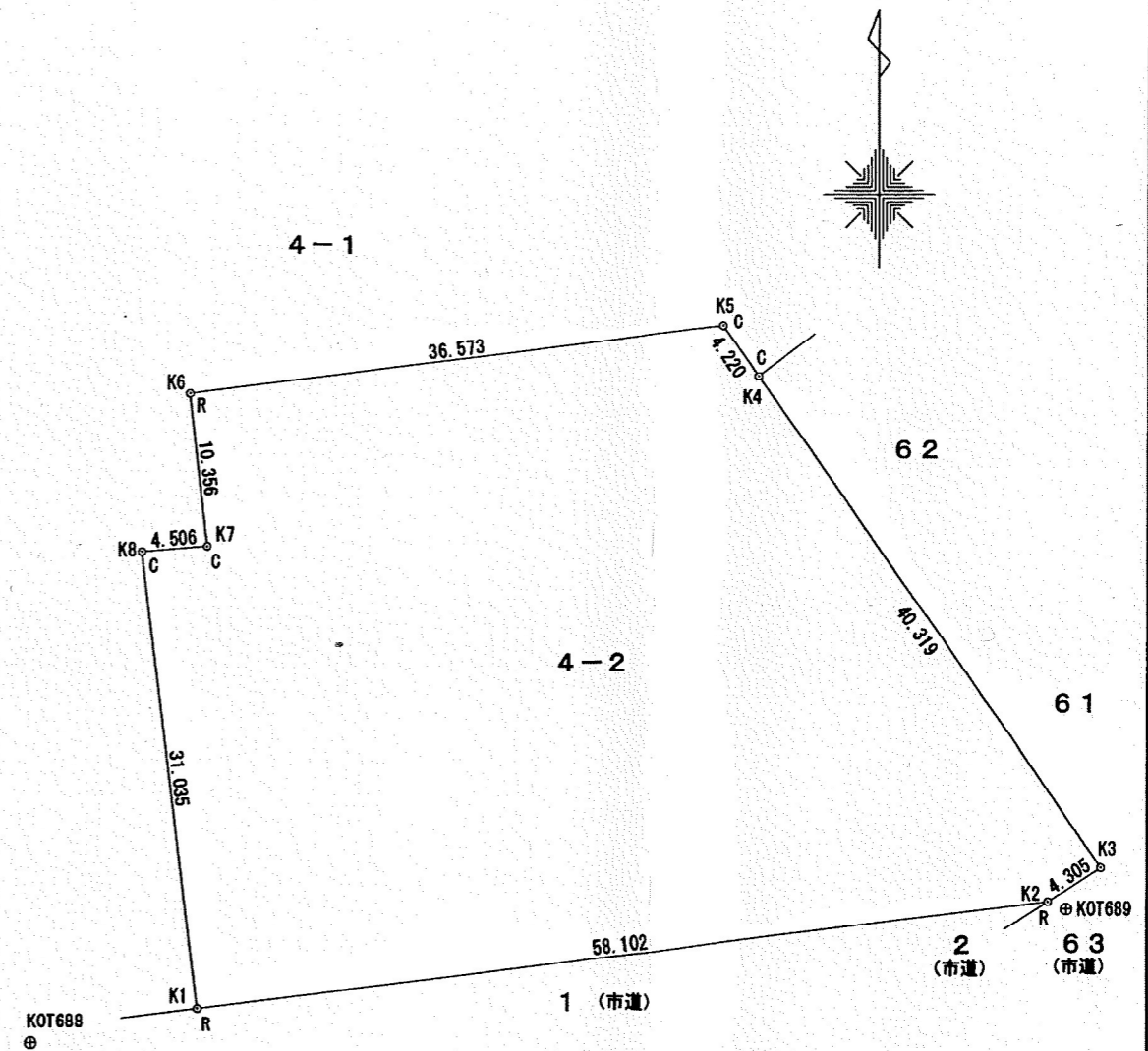
| 地番 | 4-2            |                        |  |        |
|----|----------------|------------------------|--|--------|
| 測点 | X <sub>n</sub> | Y <sub>n</sub>         | (X <sub>n+1</sub> -X <sub>n-1</sub> ) Y <sub>n</sub> | 距離     |
| K1 | -119694.907    | 40644.825              | -958648.842450                                       | 58.102 |
| K2 | -119687.694    | 40702.478              | 387039.863302  | 4.305  |
| K3 | -119685.398    | 40706.120              | 1438717.105280                                       | 40.319 |
| K4 | -119652.350    | 40683.023              | 1484726.924385                                       | 4.220  |
| K5 | -119648.903    | 40680.589              | -45928.384981  | 36.573 |
| K6 | -119653.479    | 40644.303              | -604096.275489                                       | 10.356 |
| K7 | -119663.766    | 40645.499              | -432021.008871                                       | 4.506  |
| K8 | -119664.108    | 40641.006              | -1265601.567846                                      | 31.035 |
|    | 倍面積            | 4187.813330            |  |        |
|    | 面積             | 2093.9066650           |  |        |
|    | 地積             | 2093.90 m <sup>2</sup> |  |        |
|    | 坪数             | 633.40 坪               |  |        |

使用街区多角点

| 測点名   | X座標         | Y座標       |
|-------|-------------|-----------|
| 10B89 | -119736.714 | 40550.830 |
| 10B88 | -119568.063 | 40446.609 |
| 10C99 | -119703.694 | 40781.580 |
| 10C98 | -119676.404 | 40993.010 |

引照点表

| 点名          | X座標         | Y座標       |
|-------------|-------------|-----------|
| 器械点 KOT688  | -119697.251 | 40633.547 |
| 後視点 KOT689  | -119688.181 | 40703.738 |
| 視準角 0-00-00 | 距離          | 70.775    |
| 測点          | 観測角         | 距離        |
| K1          | 355-37-15   | 11.519    |
| K8          | 290-02-50   | 33.972    |
| 点名          | X座標         | Y座標       |
| 器械点 KOT689  | -119688.181 | 40703.738 |
| 後視点 KOT688  | -119697.251 | 40633.547 |
| 視準角 0-00-00 | 距離          | 70.775    |
| 測点          | 観測角         | 距離        |
| K2          | 28-30-40    | 1.351     |
| K3          | 137-55-00   | 3.663     |
| K4          | 67-19-48    | 41.388    |



筆界標略号 S…石杭 C…コンクリート杭 P…プラスチック杭 R…金属標 M…刻ミ ( )

(平成 23 年 11 月 24 日作成)

縮尺 1/500